

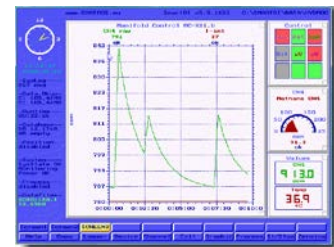
## SmartDI® Deck-Unit

### Datalogger, Process Controller and online Data Display

The "Smart Data Interface" *SmartDI*® acquires data from different sensors and analyzer or takes control of production processes. During the collection of data the pre-processing validates already the values and passes quality-evaluated data records, according to ISO, to back-end systems. Data can be stored up to 5 years, continuously highly solved, on a CompactFlash (CF) memory card. Over a data transmission telemetry (RS-232 or optionally RS-485, GSM, WLAN, Ethernet, Radio link etc.) data are transmitted automatically online or at given times. With the *SmartDI*® different sensors and measuring systems, e.g. CTD probes or meteorology's can be operated. In addition, up to 10 serial interfaces as well as optionally digital or analogue in- or outputs can be used. With the integrated quick look function as well as extensive configuration and diagnostic menus a user-friendly man-machine interface is realized. The modular structure makes a simple and economical adjustment to the most diverse applications possible, which is extensively expandable.



*Small DeckUnit for Chlorophyll data processing and display (Aquaculture system KOREA)*



*Graphical configurable quick-look*

Specification	
<b>Housing</b>	Industrial embedded panel PC • Stable metal housing IP65 or 19" Rack IP65 front
<b>Display</b>	8.4" touch-screen LCD • Other on request • External / remote VGA display supported
<b>Software</b>	<i>SmartDI</i> ® embedded multitasking real-time system
<b>Memory</b>	2 GB industrial grade CompactFlash • No moving parts • Up to 5+ years data logging
<b>Serial Interfaces</b>	RS-232 or RS-485 interfaces • Max. 36 serial interfaces • Optionally external RS-485 bus
<b>Analogue</b>	Optionally 8 channel 24 bit analogue inputs • $\pm 10\text{mV}$ ... $\pm 10\text{V}$ or 0/4-20mA • Expandable
<b>Digital</b>	Optionally digital-in, -out or -counter • Relay 5A / 230VAC or 24VDC • Expandable
<b>Processing</b>	180+ Calibrate – and standard formulas following IEEE and UNESCO • Virtual channels with independent configurations (e.g. sample rates) • Simulations quality validating, error and spike detection • Statistical values following international ISO standards • QS data flagging
<b>GPS</b>	GPS position-control (geo correlation) • Acquisition control by position
<b>PLC Controller</b>	Optionally Soft-PLC fully programmable for any process • Event/alert control and messages on request • Please specify your requirements, we will provide a suitable solution
<b>External Sensors</b>	Serial line interface for more than 50 probes, meteorology's, automatic sampler and analyzer of different manufacturers (AADI Aanderaa, Bbe MOLDEANKE, FSI, GPS / NMEA-0183, RDI, Seabird, Sea&Sun, SYSTEa, TriOS, Turner, WTW, various meteorology, etc.)
<b>Power</b>	110-230V AC or 24V DC • 20W typ. • UPS can be integrated • Low-power (5W display off) External Li-Ion battery available

